

Worksheets to print out from [sofatutor.com](https://www.sofatutor.com)

Half and Quarter Hours



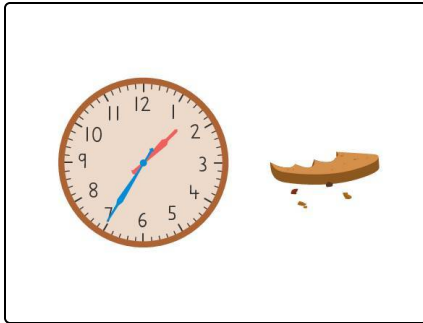
- 1 What time can Zuri and Freddie go swimming?
- 2 Can you help Freddie and Zuri?
- 3 When do Freddie and Zuri need to put sun screen on?
- 4 When do Freddie and Zuri need to drink water?
- 5 Do Zuri and Freddie have their times correct?
- 6 Can you find out what time it is when Freddie and Zuri drink water?
- + with many hints, answer keys, and solution approaches for all tasks



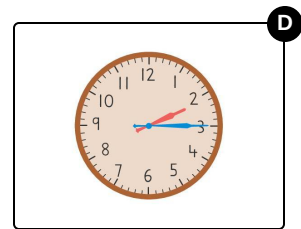
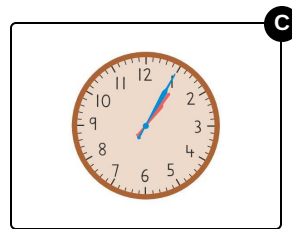
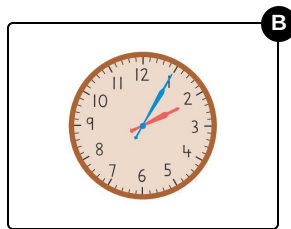
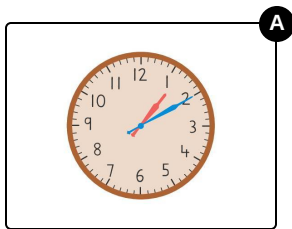
The complete package, including all tasks, hints, solutions, and solution approaches, is available to all subscribers of [sofatutor.com](https://www.sofatutor.com)

What time can Zuri and Freddie go swimming?

Select the clock that shows half an hour later.



Freddie and Zuri finished their lunch at **1:35**. They know they have to wait **half an hour** before they can go swimming. What time can they go swimming?



Our hints for the tasks

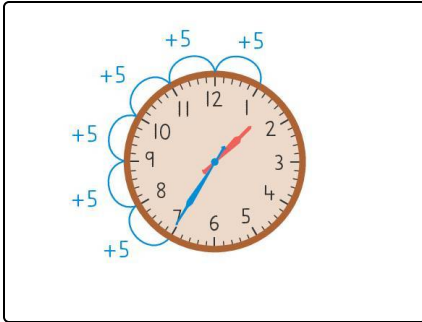
1
from 6

What time can Zuri and Freddie go swimming?

1. Hint

Freddie and Zuri finished their lunch at **1:35**. What time will it be **half an hour**, or **30 minutes** after that?

2. Hint



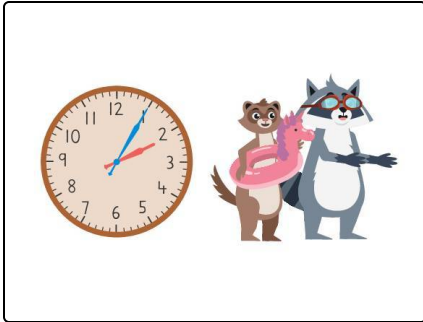
Here are the jumps we can make around the clock to find the time they can swim again.

Solutions and solution approaches for the tasks

1
from 6

What time can Zuri and Freddie go swimming?

Answer key: B



Zuri and Freddie can go swimming again at **2:05**.

If we count by **fives** from **1:35** until we reach **30**, we land on **2:05**.