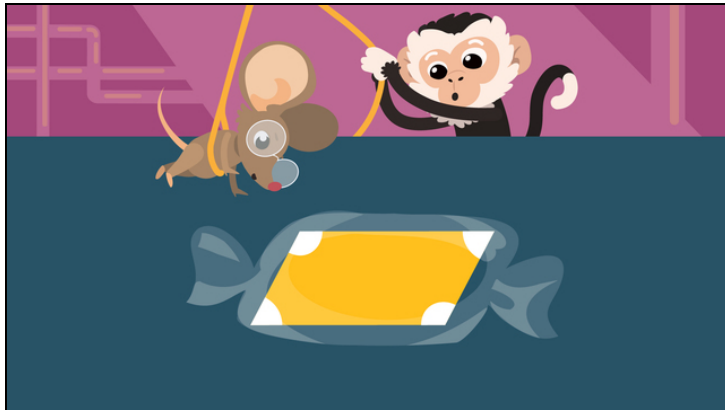




Worksheets to print out from [sofatutor.com](https://www.sofatutor.com)

# Quadrilaterals (Rhombus, Parallelogram, Trapezoid)



- 1 Match the shapes.
- 2 Identify the quadrilaterals.
- 3 Highlight the trapezoids.
- 4 Properties of shapes.
- 5 Which shape doesn't belong?
- 6 Name the shape.
- + with many hints, answer keys, and solution approaches for all tasks

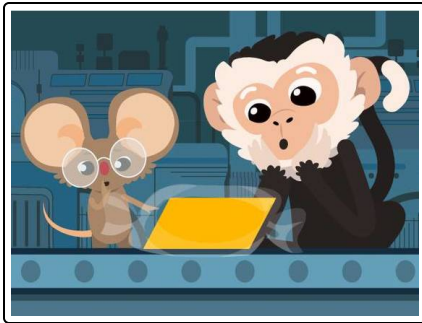


The complete package, including all tasks, hints, solutions, and solution approaches, is available to all subscribers of [sofatutor.com](https://www.sofatutor.com)

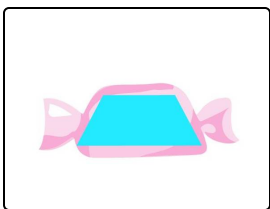


## Match the shapes.

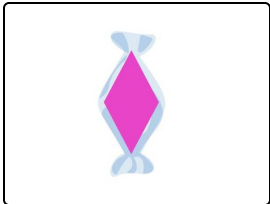
Identify the quadrilaterals that are the same.



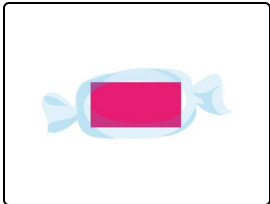
Nico and Nia enjoyed the candy sorting so much, they want to do more! Help them match the shapes.



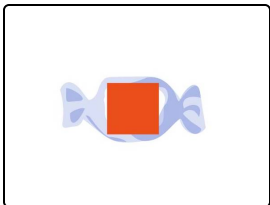
A



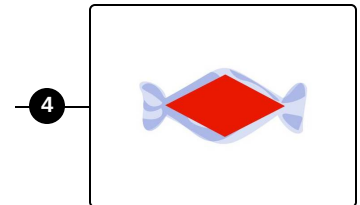
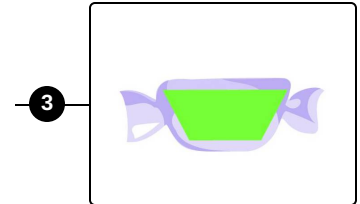
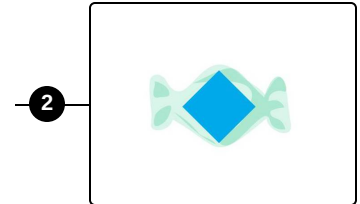
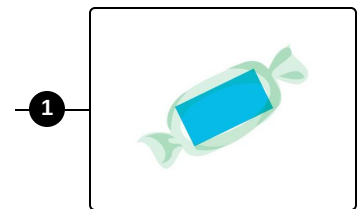
B



C



D



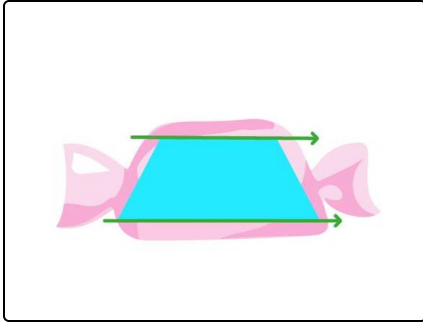


## Our hints for the tasks

1  
from 6

### Match the shapes.

#### 1. Hint



The trapezoid shaped candies only have one pair of parallel sides.

---

#### 2. Hint

The rhombus shaped candies have 4 sides of equal length.

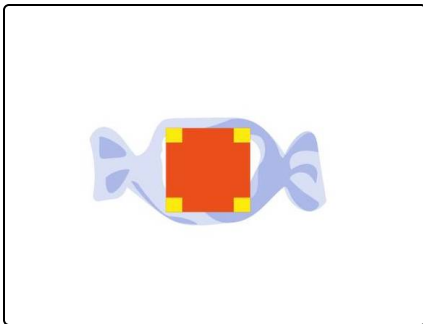
---

#### 3. Hint

The rectangular candies have two pairs of parallel sides and 4 right angles.

---

#### 4. Hint



The square candies have 4 right angles.

---

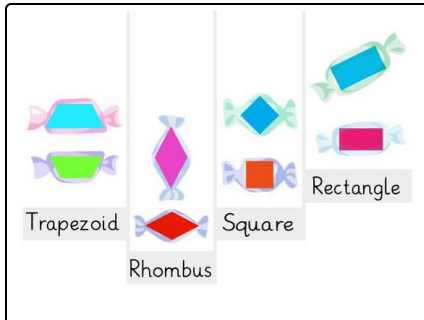


## Solutions and solution approaches for the tasks

1  
from 6

### Match the shapes.

Answer key: A—3 // B—4 // C—1 // D—2



To find the matching candy shapes, remember to think about the properties of each shape.

When the shapes are turned in **different orientations**, it can make them look different. Try to **visualize rotating the shapes**, so that they are in another orientation to help you compare them.